

Conte River Bounds Highway **24 Hectares :: \$1,680,000**



[SEE THE PROPERTY VIDEO HERE !!!](#)

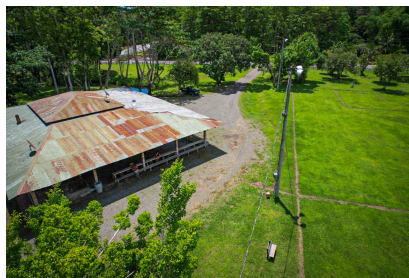
This titled property is an existing commercial facility that offers both lodging in its cabinas and a fully operational restaurant and bar.



The property is 50% pastureland, 25% in teak silviculture, and the rest in secondary reforestation.

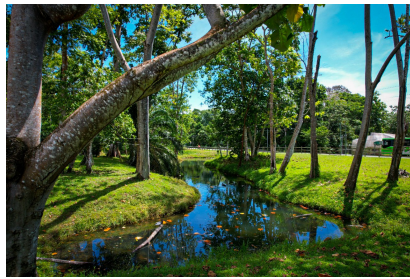


It bounds the Puerto Jimenez highway and has grid electrical and its own internal water supply.



Located between La Palma and Puerto Jimenez, Las Garzas Doradas is ideally situated to tap the hiker market destined to or returning from the Los Patos entrance to Corcovado National Park, in addition to visiting tourists traveling overland to the Osa Peninsula.





Titled and ready to go with all applicable permits and licenses, including full liquor license.



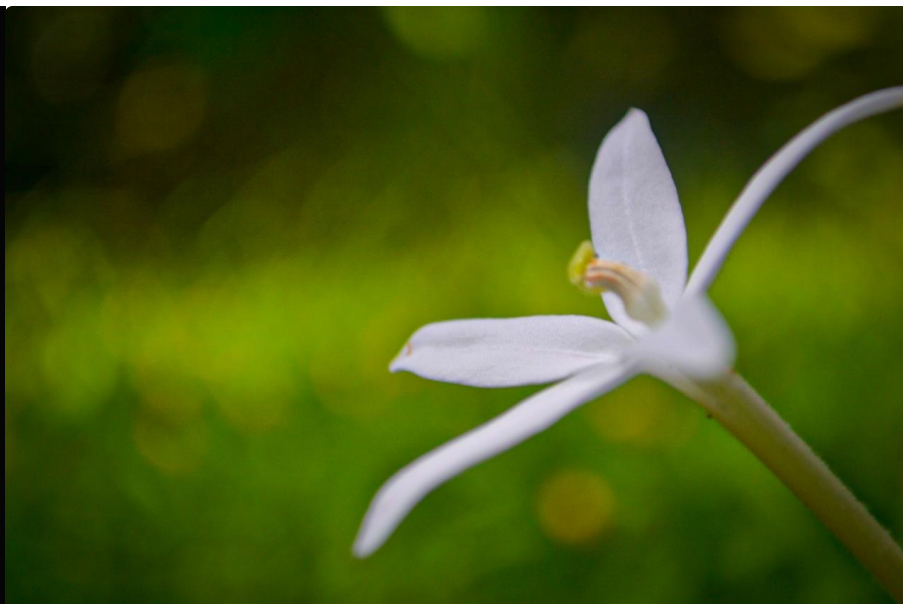
NEARBY ACTIVITIES

Mountain View
Ranchland
Secondary Forest
Streams
Grid Power
Municipal Water

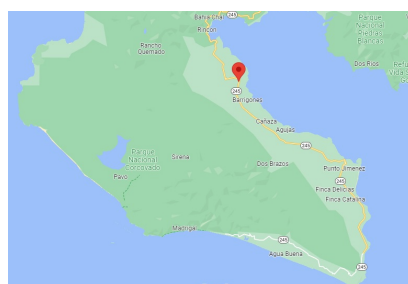
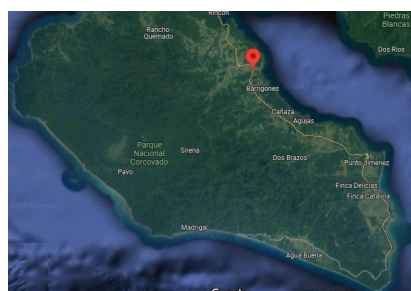
Structure description: Turnkey commercial cabins/restaurant/bar
Access: Bounds main highway for year-round access



Turnkey commercial opportunity with considerable additional property for subdevelopment or additional commercial development.



Call or write for more information or to schedule your showing.



Paul Collar
Osa Pen Realty : Your Key to
Paradise!
+506 8704-0027
land@osapenrealty.com

